

Webster
UNIVERSITY

international.webster.edu

International Student Guide **to Webster University**



Webster Hall-Main Campus



Browning Hall



East Academic Building



Webster Library



Welcome to Webster University's main campus in St. Louis, Missouri

Located in the suburbs of St. Louis, Missouri, Webster University provides a student-centered experience with real-world perspective. Founded in 1915 by the Sisters of Loretto, a Catholic religious organization, Loretto College, as it was known then, was one of the first Catholic women's colleges west of the Mississippi River.

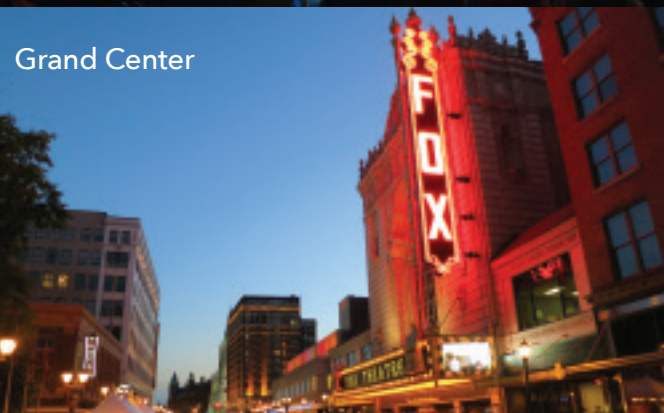
You'll appreciate the individualized attention of our faculty and staff and benefit from the worldwide connections you'll make as a student at one of the nation's most global universities with campuses on four continents.



The Gateway Arch



Busch Stadium



Grand Center

The city of St. Louis was founded in 1764 by French fur traders Pierre Laclède and Auguste Chouteau, and named after Louis IX of France. During the 19th century, St. Louis became a major port on the Mississippi River with steamboats and cargo boats lining the wharfs.

Today, metropolitan St. Louis' diverse economy is home to Fortune 500 companies, major research universities and three professional sports teams, the St. Louis Cardinals (baseball), the St. Louis Blues (hockey). and St. Louis CITY SC (soccer). It is also home to the St. Louis Zoo, annually ranked as one of the nation's best and the Missouri Botanical Garden.



City Museum



Campus life at Webster St. Louis combines a lively, international student community with the tranquility of open spaces and charming architecture. Students can often be found watching one of Webster's many athletic teams, participating in one of the student organizations, volunteering in the local community or visiting the many cultural sights of St. Louis.

Athletic Events on Campus

Experience an integral part of American university culture by attending sporting events at Webster. The games are a great way to have fun with friends and show school spirit! Webster is part of the St. Louis Intercollegiate Athletic Conference and has sports teams including soccer, volleyball, softball, track, cross country, basketball, tennis, golf, baseball, and cheerleading.

Plays and Concerts

Throughout the academic year, Webster St. Louis has a number of concerts, plays and film festivals on campus. For example, Webster houses a professional theater company called The Repertory Theatre of St. Louis that provides a special rate on tickets for students.

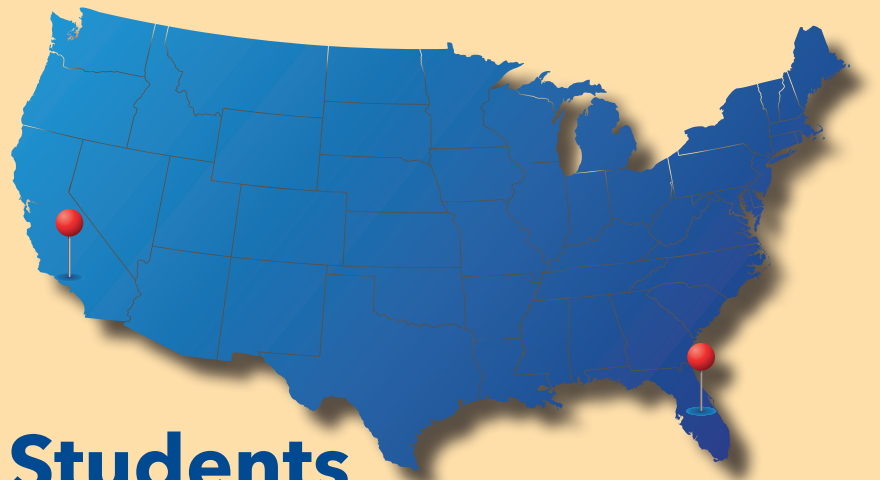
Housing

Over 700 students live on campus at Webster St. Louis. Our student-centered learning environment supports our expectation of academic achievement and personal development. On campus housing options feature fully furnished facilities with social lounges and study spaces and living on campus provides the convenience of a 5-minute walk to classes, the library and other campus activities.

Webster University St. Louis offers a variety of housing options, from residence halls to apartment style housing. All options offer access to laundry facilities, Housing & Residential Life Resident Assistant staff members (who reside on property), internet access, and other amenities based on housing placement.



Alternative City Campuses For International Students

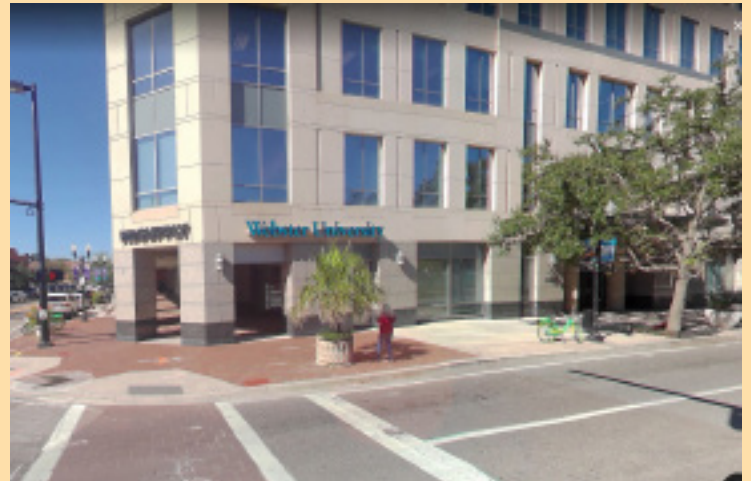


IRVINE, CALIFORNIA

International students can study at our Irvine, California campus, which provides accredited undergraduate and graduate school education to students in California and across the world. With opportunities to study in Irvine or earn a degree online, academic programs are focused on student success and taught by faculty with professional experience in their academic fields.

Convenient to Orange County as well as Newport and Laguna Beach, many students find that the location, small class sizes and individual attention result in better networking opportunities and successful learning outcomes within their profession or local community.

For more information visit Webster University Irvine's website.



ORLANDO, FLORIDA

Just one block from the home of the Orlando Magic basketball team, within walking distance from many major downtown corporations and only blocks away from the proposed Creative Village educational hub. The location is centrally located at the intersection of I-4 and Hwy. 408, students find the location, small class sizes and individual attention result in better networking opportunities and successful learning outcomes within their profession or local community. International students wanting to study at our Florida location will get a metro campus experience at a downtown location which boasts of 11 state-of-the-art classrooms, 2 computer labs, 2 conference rooms with breakout spaces and video conferencing capabilities for WebNet+ classes.

For more information visit Webster University Orlando's website.

Webster University: A Leader in Global Education

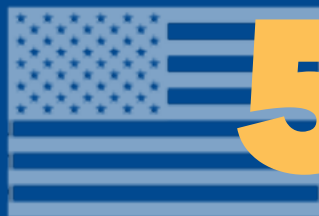


Number of states and countries our students come from:



138

COUNTRIES



50

STATES
(plus the District of Columbia)

**100% of
students**

participate in research, internships or capstone projects

1:9

Faculty/student ratio

200,000

Worldwide Alumni

7+

Residence facilities including traditional residence halls,
and apartment style availability

College of Arts & Sciences • George Herbert Walker School of Business & Technology
Leigh Gerding College of Fine Arts • School of Communications • School of Education
MORE THAN 100+ ACADEMIC PROGRAMS THROUGHOUT 5 COLLEGES AND SCHOOLS



Academic Program Offerings



Mascot: THE GORLOK

ST. LOUIS, MISSOURI

Undergraduate

Accounting (BS)
Advertising and Marketing Communications (BA)
Animation (BA)
Biological Sciences (BS)
Biological Sciences: Chemistry (BS)
Biological Sciences: Health and Medicine (BS)
Biological Sciences: Research and Technology (BS)
Business Administration (BS)
Business Administration (BS): Sports and Entertainment Management
Chemistry (BS)
Communications (BA)
Computer Science (BS)
Computer Science: Cybersecurity (BS)
Educational Studies (BA)
English (BA)
Dance (BA)
Film Studies (BA)
Film, Television & Video Production (BA)
Finance (BS)
Games and Game Design (BA)
Interactive Digital Media (BA)
International Relations (BA)
International Relations (BA): International Economics
International Relations (BA): Migration and Refugee Studies
Management (BA)
Management: Human Resources

Management (BA)
Management: International Business (BA)
Management: Marketing (BA)
Management: Sports and Entertainment Management (BA)
Management Information Systems (BS)
Mathematics (BS)
Media Communications (BA)
Music (BA)
Photography (BA)
Pre-Engineering
Pre-Medicine
Pre-Dentistry
Psychology (BA/BS)
Psychology: Mental Health (BA)
Public Relations (BA)
Sociology (BA)

Graduate

Biomedical Sciences (MS)
Counseling (MA)
Criminal Justice (MS)
Cybersecurity (MS)
Data Analytics (MS)
Data Analytics (MS) with Artificial Intelligence Certificate
Finance (MS)
Forensic Accounting (MS)
Human Resources Management (MA)
Human Services (MA)
Information Technology Management (MA)
International Relations (MA)
Legal Studies (MA)
Management and Leadership (MA)

Master of Health Administration (MHA)
Master of Business Administration (MBA) -emphases areas
(Corporate Communications, Corporate Finance, Cybersecurity, Digital Marketing, Enterprise Resource Planning, Health Administration, Information Technology Management, International Business, Marketing, Project Mangement)

ORLANDO, FLORIDA

Graduate

Criminal Justice (MS)
Cybersecurity (MS)
Finance (MS)
Human Resources Management (MA)
Human Services (MA)
Information Technology Management (MA)
Management and Leadership (MA)
Master of Business Administration (MBA)
Master of Health Administration (MHA)

IRVINE, CALIFORNIA

Undergraduate

Management (BA)

Graduate

Cybersecurity (MS)
Human Resources Management (MA)
Management and Leadership (MA)
Master of Business Administration (MBA)

Why Choose Webster?



Rankings

US News and World Report

Webster University continues to be ranked in the top tier of the Regional Universities-Midwest category of the *U.S. News and World Report* college rankings.

Webster was ranked 15th in the 2021 edition, and first among St. Louis-area schools in this category for the eleventh consecutive year. The publication also ranked Webster highly for its economic diversity and campus ethnic diversity, affordability, faculty resources, study abroad, military friendliness and value.

Washington Monthly

Washington Monthly magazine in 2019 again named Webster University as among the best universities in the country in its 2019 College Guide and Rankings, which ranked the best national universities that help "non-wealthy" students attain marketable degrees. It also listed Webster in its "Best Bang for the Buck: Midwest Universities" category. The magazine measured the "public good" that a university or college contributes in order to come up with the ranking, examining social mobility of students, research, and public service.

Forbes Magazine

In 2019, Webster was recognized among America's Top Colleges by Forbes magazine for the ninth consecutive year.

Wall Street Journal

The Wall Street Journal/Times Higher Education 2020 includes Webster in its ranking of the top institutions in the country.

WalletHub

In 2019 WalletHub named Webster University the second-best university in Missouri, the 36th best in the Midwest, and the 159th best in the United States for undergraduate students who want to earn the best degree at the lowest possible cost.

CollegeNET

CollegeNET's Social Mobility Index found Webster excels in offering accessible and affordable bachelor's degrees for students from households that earn less than the average national income. Importantly, the study concludes that Webster graduates typically increase their earning potential by securing

employment that increases their income level from precollegiate levels. In fact, the University is one of the best in the country for increasing social mobility for these students, ranking first among all St. Louis regional institutions and sixth in the nation among private institutions.

Accreditation

Webster University is accredited by The Higher Learning Commission, 230 South LaSalle Street, Suite 7-500, Chicago, IL 60604, hlcommission.org 800.621.7440.

The accreditation, which was awarded in 1925, includes undergraduate and graduate levels at all locations where the University offers programs.

Career Services

The Career Planning & Development Center (CPDC) assists international students and alumni with exploring and defining their personal career goals while developing the skills and confidence necessary to succeed. Over 90% of our international students take advantage of CPT and OPT opportunities. International students are encouraged to use Webster's Handshake account, access career resources on the CPDC website, and attend virtual or live events and career fairs offered by the Career Planning & Development Center.

Study Abroad

Webster's Study Abroad programs are frequently ranked in the top 2 percent of the 1,500 colleges and universities surveyed in the "America's Best Colleges" 2020 edition of *U.S. News & World Report*. The distinction recognizes study abroad programs that involve substantial academic work for credit and considerable interaction between the student and the culture.



REQUIRED APPLICATION DOCUMENTS	
Application	<div><div>Undergraduate Application</div><div>No fee to apply</div><div>Graduate Application</div><div>\$50 fee to apply</div></div>
Proof of English Proficiency	<div><div>If English is not your first language, students will need to submit proof of English skill. If you do not meet English requirements, you can still be admitted as ESL-Contingent and take ESL courses. We accept a variety of test scores:</div><div><ul style="list-style-type: none">• TOEFL PBT 550• TOEFL iBT: 80• IELTS: 6.0• DUOLINGO: 120• Pearson: 53</div></div>
Official Transcripts	<div><div>For an initial admission decision, students may submit scanned copies of their final, original transcripts. To change an initial admission decision into full admission, students must present their original, final documents to a Webster staff member in person to be verified, after arriving on campus. Alternatively, students may choose to ask their university to send official transcripts directly to Webster in a sealed envelope. If the transcript is not in English, a certified translation must be provided. International students may be eligible for International Transfer Credits.</div></div>
Essay or Resume	<div><div>300-500 word essay on a topic of your choice.</div></div>
Certificate of Finance	<div><div>The U.S. government requires students to provide proof of financial support for at least 1 year for both education and living expenses. Financial documents must be original and dated no more than 6 months before the start of your studies.</div></div>
Copy of Passport ID Page	
Specialty Programs	<div><div>These programs have additional admission requirements. These programs include Art, Music, all School of Education programs, and more. Your admission counselor will contact you with details.</div><div>*A letter of recommendation may be requested after an initial review on a case-by-case basis.</div></div>

Application Deadlines

UNDERGRADUATE PROGRAMS

Semester	Classes Begin	Application Deadline
Fall 2021	Aug. 20, 2021	June 30, 2021
Spring 2022	Jan. 17, 2022	Nov. 30, 2021
Fall 2022	Aug. 22, 2022	June 30, 2022

GRADUATE PROGRAMS

Term	Classes Begin	Application Deadline
Fall 1, 2021	Aug. 16, 2021	June 30, 2021
Fall 2, 2021	Oct. 18, 2021	Aug. 30, 2021
Spring 1, 2022	Jan. 10, 2022	Nov. 30, 2021
Spring 2, 2022	Mar. 21, 2022	Jan. 31, 2022
Summer 2022	May 30, 2022	Mar. 31, 2022
Fall 1, 2022	Aug. 15, 2022	June 30, 2022

Undergraduate Scholarships

Most International Freshman and Transfer students qualify for one or more scholarships at the Webster St. Louis home campus. Students will be awarded academic scholarships based on their high school grade point average at the time of their admission decision. Scholarships are renewable for the entire duration of the program.

First Year Freshman Scholarships typically receive 10,000 USD per year – 19,000 USD per year.

Transfer students typically receive 10,000 USD per year – 16,000 USD per year.

For more Information, click [here](#).

Graduate Scholarships

Most international graduate students are currently being considered for academic scholarships. Applicants must demonstrate a strong academic standing in order to qualify for these awards. Students will be evaluated for scholarships at the time of admission.

Graduate scholarships cover 15%-20% of tuition fee.

Tuition and Costs

UNDERGRADUATE

Full-Time Tuition

Excluding Conservatory\$28,500

Housing and Meals per academic year
(average).....\$13,020

Health Insurance\$ 2,700

For more information on undergraduate tuition, click [here](#).

GRADUATE

St. Louis Full-Time Tuition.....\$750/ch

Irvine Full-Time Tuition\$780/ch

Orlando Full-Time Tuition\$645/ch

For more information on graduate tuition, visit <http://webster.edu/admissions/graduate/tuition.html>

Most of our Graduate programs are 36 Credit Hours, with 12 credit hours per semester. International students recruited for Irvine and Orlando campuses may be able to available limited scholarships.

A Premier American University

**Global.
Action-oriented.
Academically
excellent.**



Webster
UNIVERSITY

WEBSTER.EDU

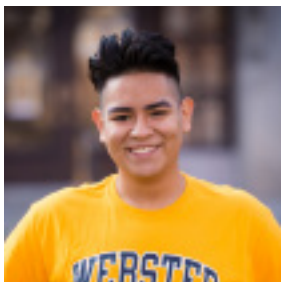
What Our Students Are Saying



LUCILLE NGUYEN
VIETNAM
Undergraduate
Business Administration and a
minor in Biology

"As an international student attending Webster University, from my perspective, Webster

is more than a home. Being far away from home for the third time, two years in high school, and my first year in college, are a struggle for me. The first day at school during the pandemic was different, but the faculties are trying really hard to connect us via Zoom or by mail. I thought that it would be hard to make new friends in college. But I was wrong. We walked on-campus and greeting people with face masks. Still, the people you will meet at Webster will be fascinating and will be a bridge to unexpected and wonderful opportunities throughout your life."



MARKO TORRES
PERU
Undergraduate, Biology

"My experience at Webster has been outstanding. When I went out for college, I had some expectations but Webster has exceeded them. By being latino

you often might be discriminated and berated but the inclusive environment at Webster gives you the opportunity to feel welcome and safe. Even during the unexpected times, the support of my professors, counselors, and advisors have been essential for my academic success."



HELIO QENDRO
ALBANIA
Undergraduate, Advertising

"Besides learning about academics, Webster has taught me how to be myself and indulge in diverse cultures."



HERMANN PONDİ
CAMEROON
Undergraduate
International Relations

"Overall, this has been a great experience. Webster St Louis is a great campus for sport; I play soccer and I had the chance to play intramurals with people

from all over the world. And you cannot talk about this campus without mentioning the diversity at Webster. Indeed, people from all over the world come to this place to learn and that gave me a broader perspective about the world. I absolutely loved it here and I hope many people will experience what I had the privilege to go through."



ERIKA GAVILANES PAREDES
EQUADOR
Graduate
MBA and MA in Management
and Leadership

"Looking back from when I started to now, I see an experience of growth, personally and professionally.

Webster University has challenged me in good ways but also providing me the tools and support I needed to become a better professional. I started only aiming to get an MBA, and because of the wonderful opportunities and grants I received, now I am able to pursue a dual degree and a graduate certificate."



DEBHUTI ROY
INDIA
MBA & Master of Health
Administration Dual Degree

"Dr. Simone Cummings, dean of the Walker School of Business and Technology, is my favorite professor. After the completion of my program, I had met with

her to discuss my next steps. She laid down a plan and helped me look at my options. University is not just about getting good grades. Interact with new people, get involved! You never know what you might learn that could one day get you your dream job."



international.webster.edu

With its home campus in St. Louis, Missouri, USA, Webster University (www.webster.edu) comprises an action-oriented global network of faculty, staff, students and alumni who forge powerful bonds with each other and with their communities around the globe. Founded in 1915, Webster is a private non-profit university with students studying at campus locations in North America, Europe, Asia and Africa and in a robust learning environment online. The university is committed to ensuring high-quality learning experiences that transform students for global citizenship and individual excellence.

Find us on social media

<https://www.facebook.com/websteru>

<https://www.instagram.com/websteru/>

<https://twitter.com/websteru>